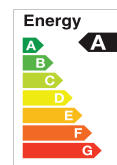
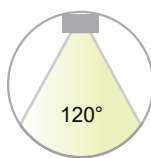




LED Linear Strip Light



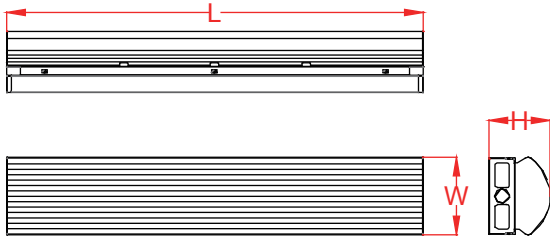
RoHS



Features & Benefits

1. 130lm/w for options.
2. Die formed of 0.5mm cold-rolled steel body.
3. 0-10v dimming, universal voltage: 100-277v.
4. Available with suspending installation and surface- mounted installation.
5. Wide application for: school, hospital, super market, office and warehouse.
6. 2ft, 4ft and 8ft dimensions for variety choices.
7. 5-year warranty.

Product Dimension



Model	L×W×H
HG-L206/DM-XXX	614x115x91 (mm) 24.17"x4.53"x3.58"
HG-L206/DM-X HG-L206/DM-XE	1206x115x91 (mm) 47.48"x4.53"x3.58"
HG-L206/DM-XY HG-L206/DM-XXE	2438x115x91 (mm) 95.98"x4.53"x3.58"

Specification

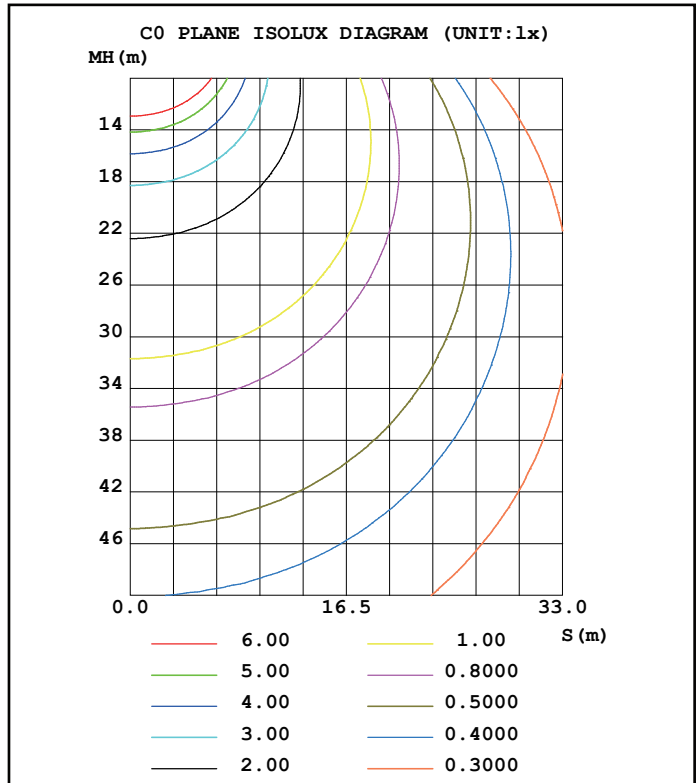
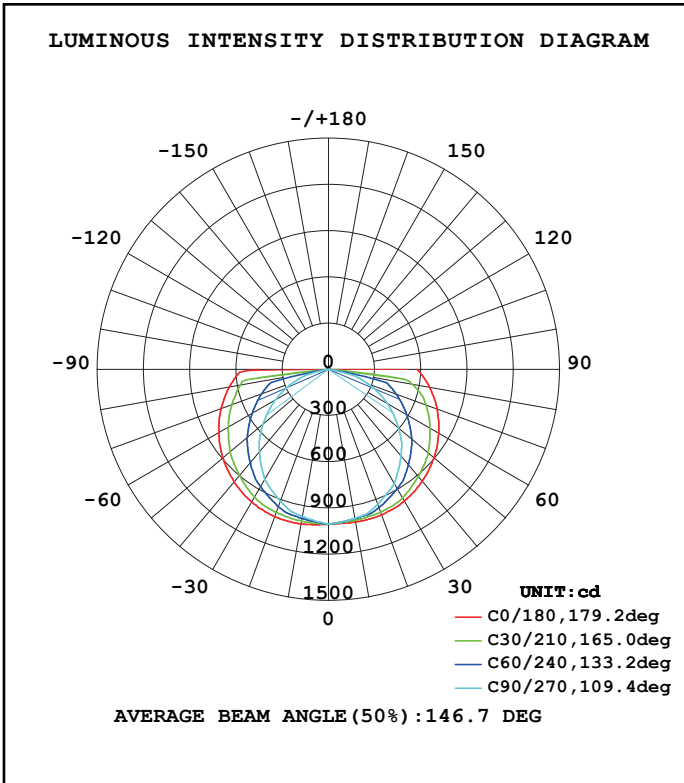
Part No.	Power	Input Voltage	Luminous Flux	Luminous Efficacy	CCT	Viewing Angle	Ra	PF	Warranty
HG-L206/DM-XXX	18W	AC100-277V	2340lm	130lm/W	3000K 3500K 4000K 5000K	120°	>80	>0.9	5Years
HG-L206/DM-X	25W		3250lm						
HG-L206/DM-XE	40W		5200lm						
HG-L206/DM-XY	63W		8190lm						
HG-L206/DM-XXE	85W		11050lm						

The following multiple functions can be achieved according to customers' requests:

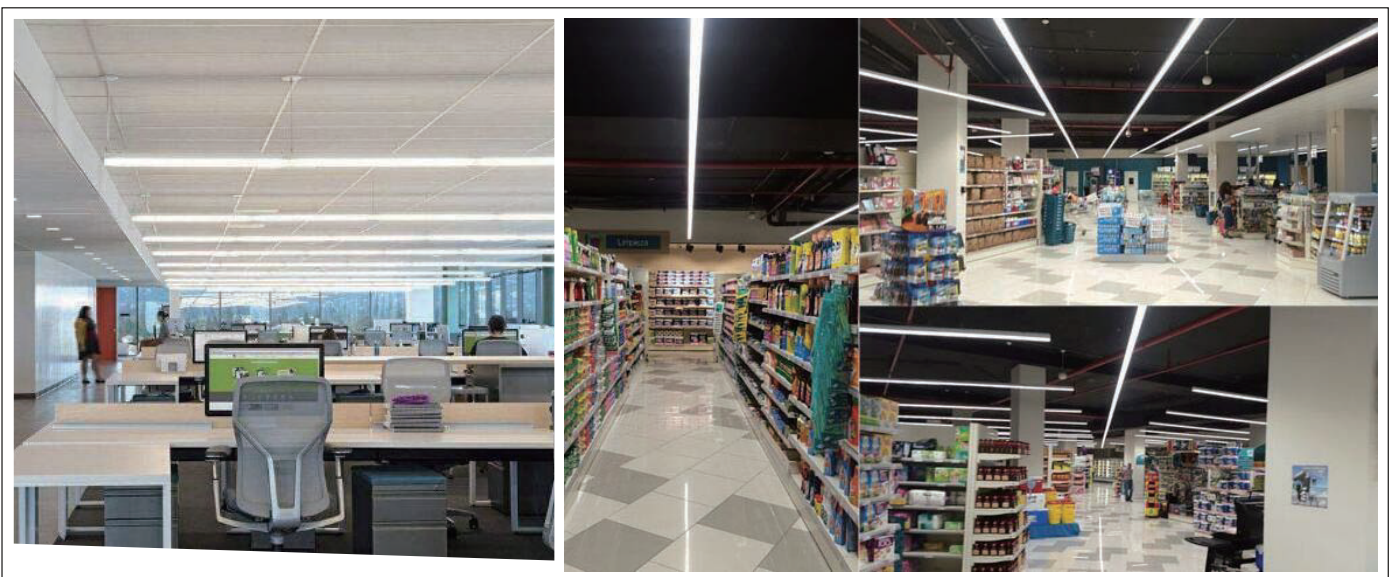
1. CCT options: 3000K, 3500K, 4000K, 5000K.
2. Available with external or built-in microwave motion sensor.
3. Emergency: the power is 8W, it can still work in 1.5hrs while emergency situation.



Testing Report

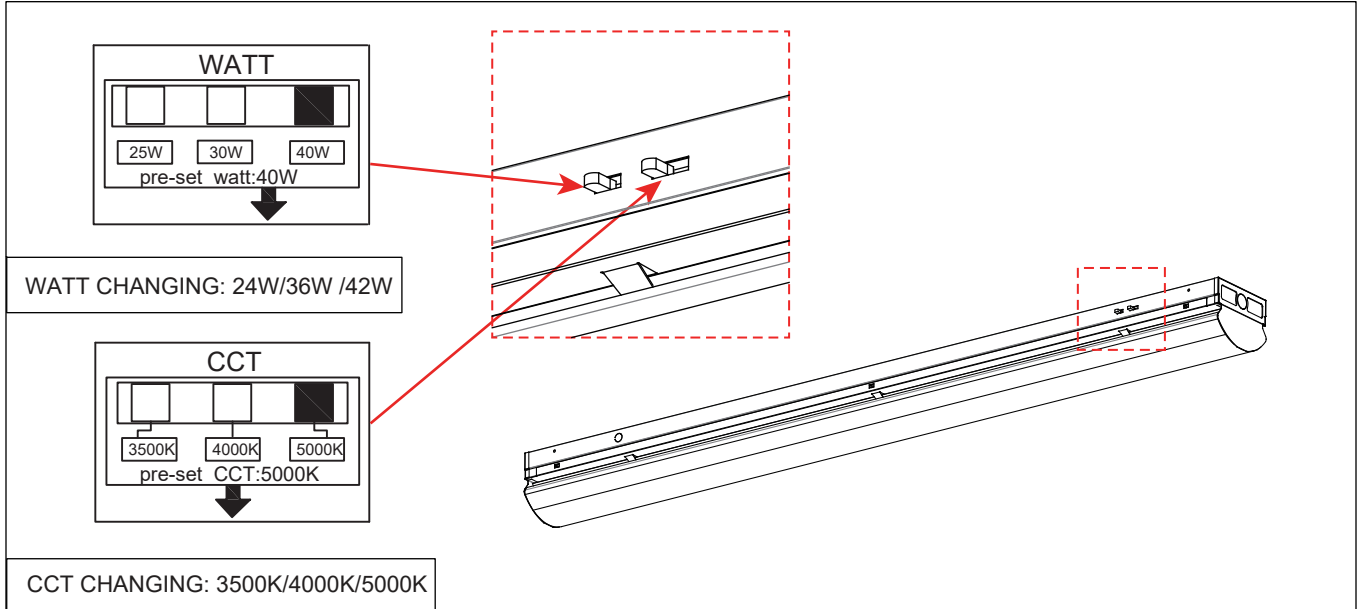


Applications



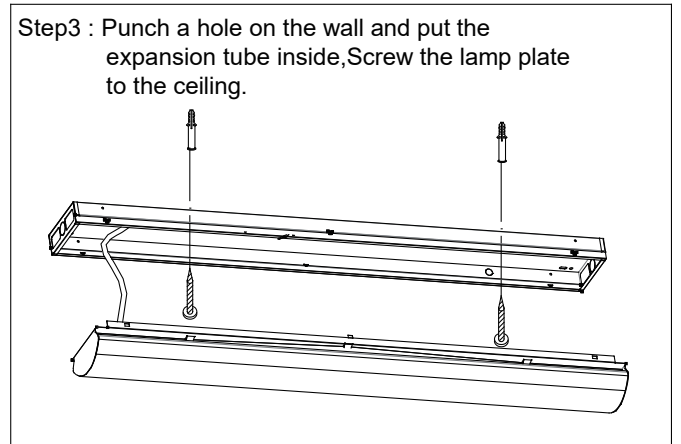
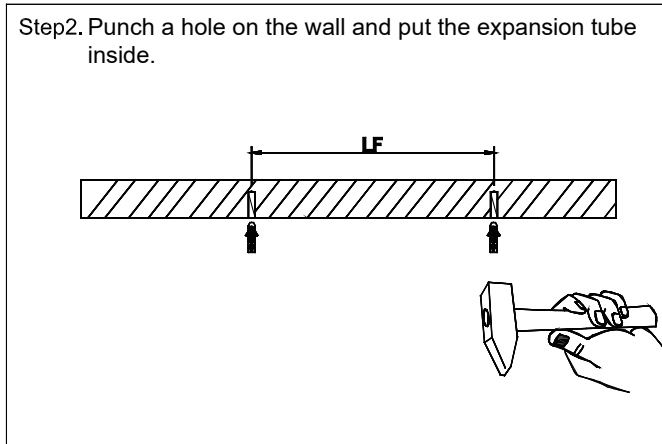
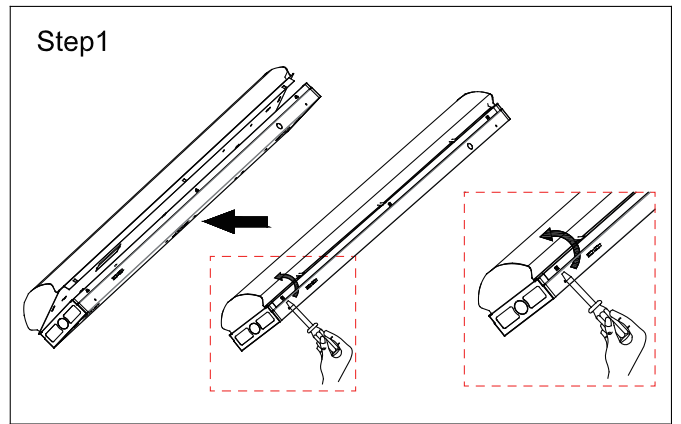
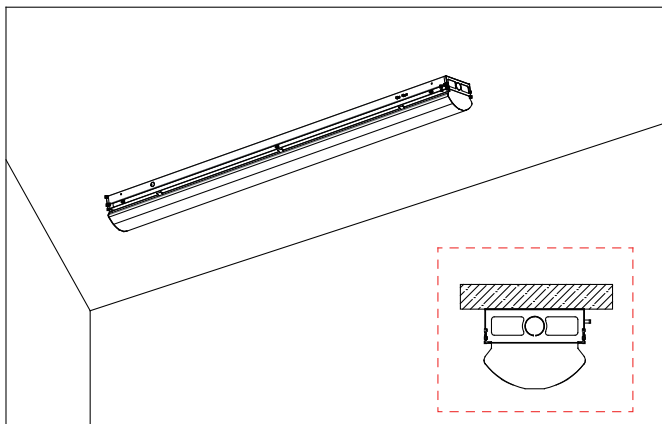


WATT AND CCT CHANGING

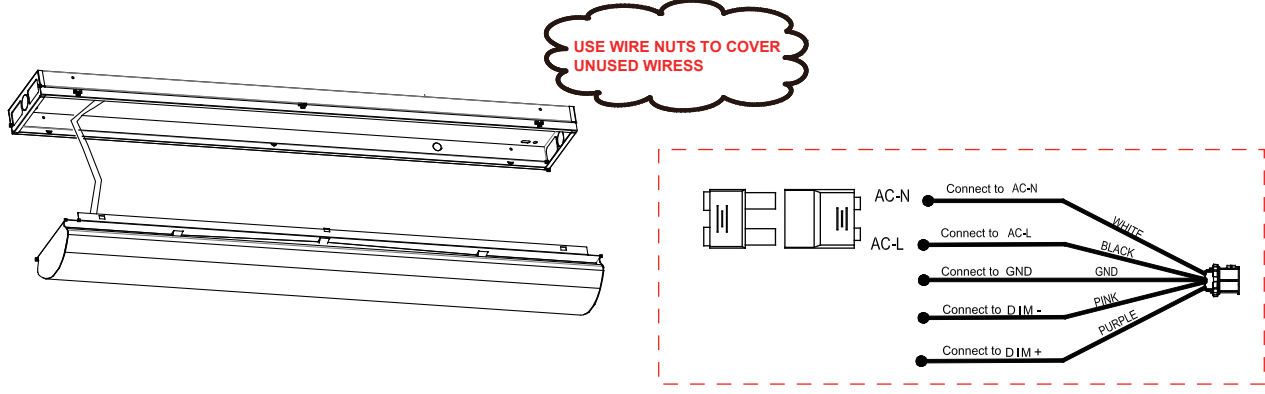


Installation manual

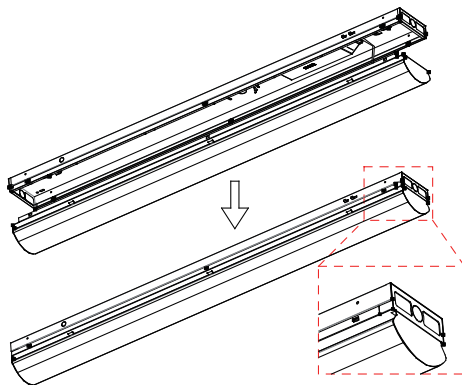
A.Surface-mounted installation



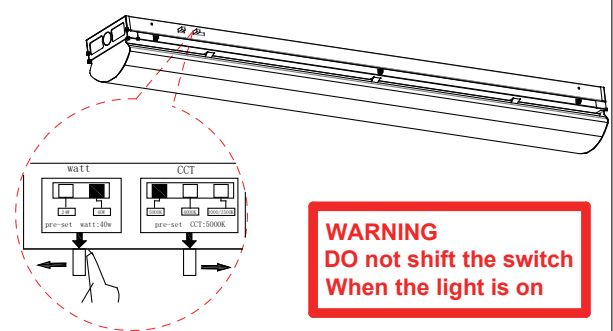
Step4. Turn off the power and wiring by using wire nuts



Step5. Press upward the cover and lock it with springs tightly which located into the fixture.

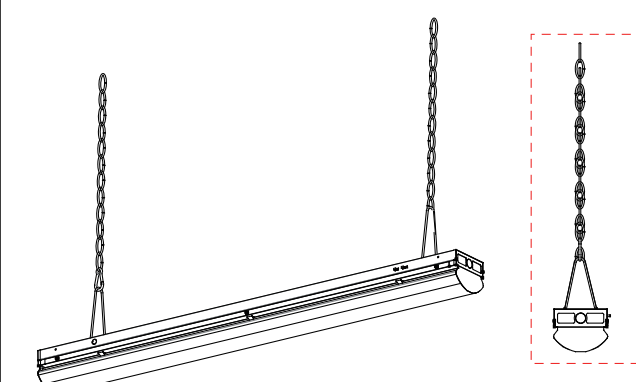


Step6. The installation completed. Turn on the switch.



B.Suspending installation (With chains)

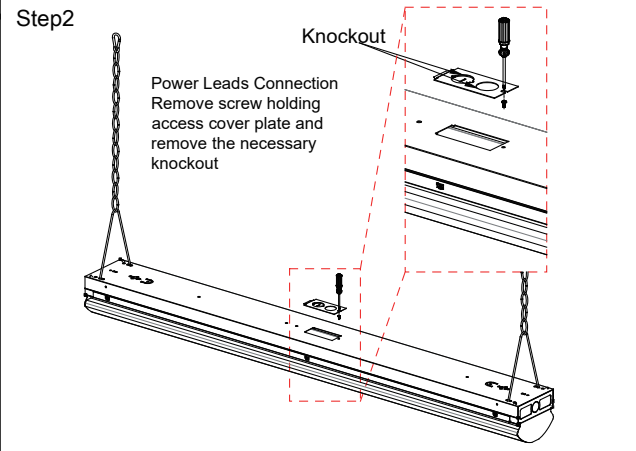
Step1: Fixing the hook and suspending the lamp



Step2

Power Leads Connection
Remove screw holding access cover plate and remove the necessary knockout

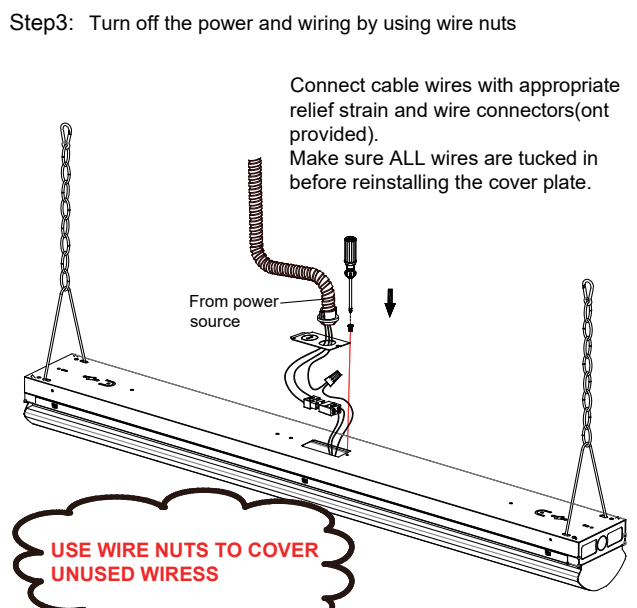
Knockout



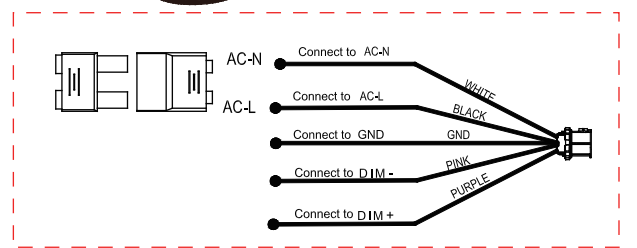
Step3: Turn off the power and wiring by using wire nuts

Connect cable wires with appropriate relief strain and wire connectors(ont provided).
Make sure ALL wires are tucked in before reinstalling the cover plate.

From power source

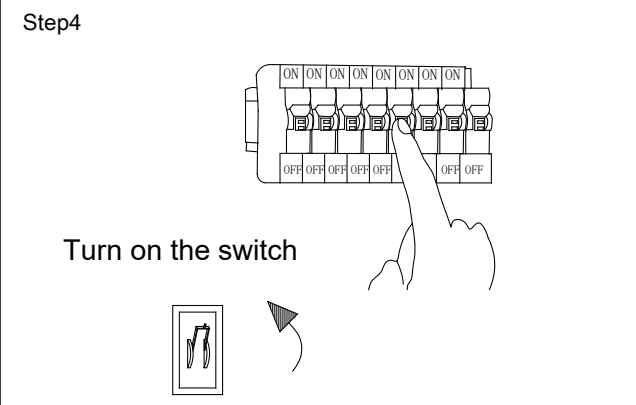


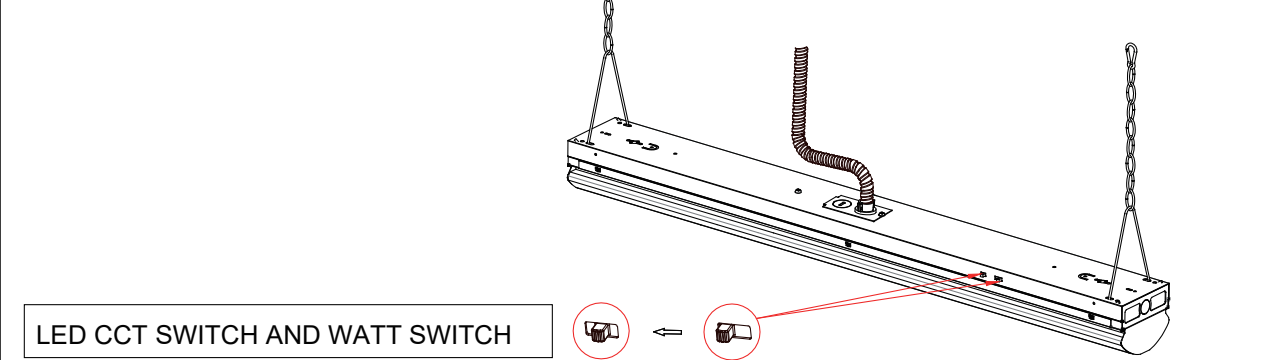
USE WIRE NUTS TO COVER UNUSED WIRES



Step4

Turn on the switch





LED CCT SWITCH AND WATT SWITCH



Important

Read this instruction carefully before installation. Keep it for further reference.
Make electrical and grounded connections in accordance with the national electrical code and any applicable code. Always turn off the power supply before installation.
This product must be installed in accordance with the applicable installation code by a qualified electrician who is familiar with the construction and operation of the product and the hazards involved.

WARNING:

- ⚠ Risk of fire or electric shock. Fixture installation requires knowledge of luminaires electrical systems. If not qualified, DO NOT attempt installation. Contact a qualified electrician.
- ⚠ Risk of fire or electric shock. Suitable for wet locations. Always turn off the power supply before installation.
- ⚠ Risk of fire or electric shock. Suitable for non-insulated surface and frame. DO NOT cover fixture with insulation liner or similar material.
- ⚠ DO NOT install fixture on unstable, loose or easily breakable surface.
- ⚠ DO NOT exert force on the surface of the fixture.

Packing /weight

Model	Outer box (L*W*H)	Qty/Ctn (pcs)	N.W/pcs (lbs/Kg)	G.W/Ctn (lbs/Kg)
HG-L206/DM-XXX	25.79"x10.63"x8.66" 655*270*220mm	4	3.52/1.6	15.84/7.2
HG-L206/DM-X HG-L206/DM-XE	49.21"x10.63"x8.66" 1250*270*220mm	4	5.79/2.63	25.3/11.5
HG-L206/DM-XY HG-L206/DM-XXE	97.64"x10.63"x8.66" 2480*270*220mm	4	11.29/5.13	49.54/22.52

Note

- 1.The installation and maintenance must be completed by electricians or professionals.
- 2.Please cut off the power before installation and maintenance.
- 3.The thermally insulating material is not allowed to cover the fixture.
- 4.Please keep away from the corrosive substance, and keep the fixture dry and clean.
- 5.Working temperature: -4°F~113°F, storage temperature: -22°F~140°F.