

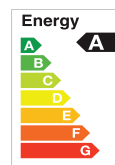
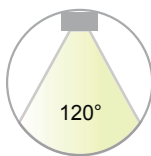


Halcon lighting

Page 1 of 7

Lighting for the future

LED Linear Strip Light



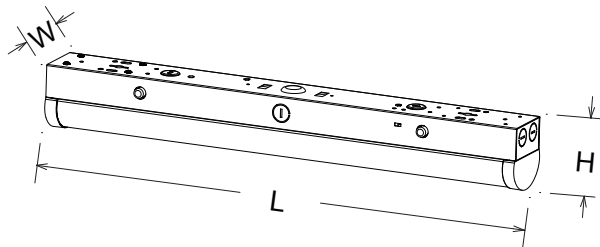
RoHS



Features & Benefits

1. 130lm/w for options.
2. Die formed of 0.5mm cold-rolled steel body.
3. 0-10v dimming, universal voltage: 120-277V/60Hz, 120-347V/60Hz
4. Available with suspending installation and surface- mounted installation.
5. Wide application for: school, hospital, super market, office and warehouse.
6. 2ft, 4ft and 8ft dimensions for variety choices.
7. 5-year warranty.

Product Dimension



Model	L×W×H
HG-L205B-2FT	609x75x83 (mm) 23.97"x2.95"x3.26"
HG-L205B-4FT	1220x75x83 (mm) 48.03"x2.95"x3.26"
HG-L205B-8FT	2438x75x83 (mm) 95.98"x2.95"x3.26"

Specification

SN: WITH SENSOR

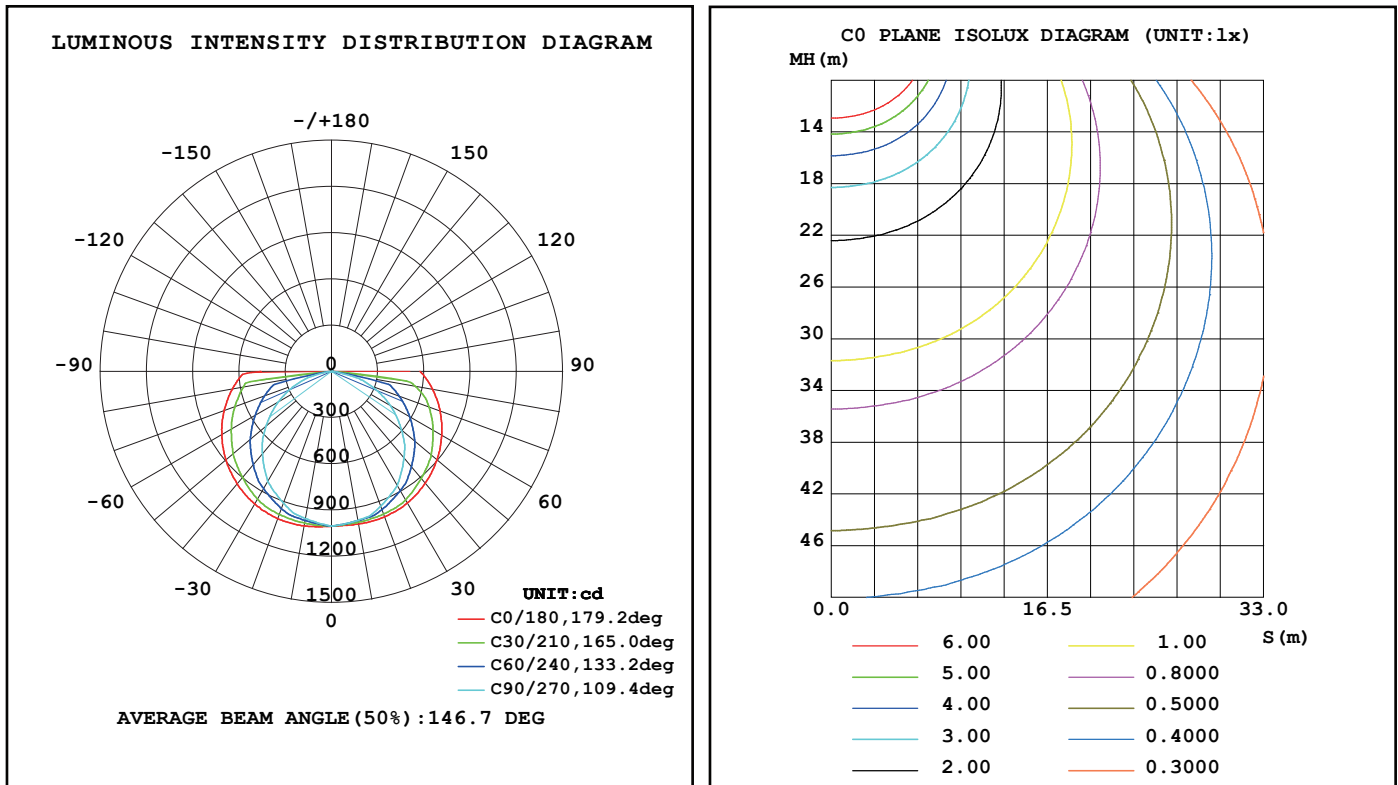
EM: WITH EMERGENCY

Part No.	Power	Input Voltage	LuminousFlux	Luminous Efficacy	CCT	Viewing Angle	Ra	PF	Warranty
HG-L205B-252F HG-L205B-252F-SN HG-L205B-252F-EM HG-L205B-252F-SN/EM	15W/20W/25W	AC120-277V/60Hz AC120-347V/60Hz	3250lm	130lm/W	3000K 3500K 4000K 5000K	120°	>80	>0.9	5Years
HG-L205B-404F HG-L205B-404F-SN HG-L205B-404F-EM HG-L205B-404F-SN/EM	25W/30W/40W		5200lm						
HG-L205B-804F HG-L205B-804F-SN HG-L205B-804F-EM HG-L205B-804F-SN/EM	50W/65W/80W		10400lm						
HG-L205B-658F HG-L205B-658F-SN HG-L205B-658F-EM HG-L205B-658F-SN/EM	50W/60W/65W		8450lm						
HG-L205B-858F HG-L205B-858F-SN HG-L205B-858F-EM HG-L205B-858F-SN/EM	70W/80W/85W		11050lm						

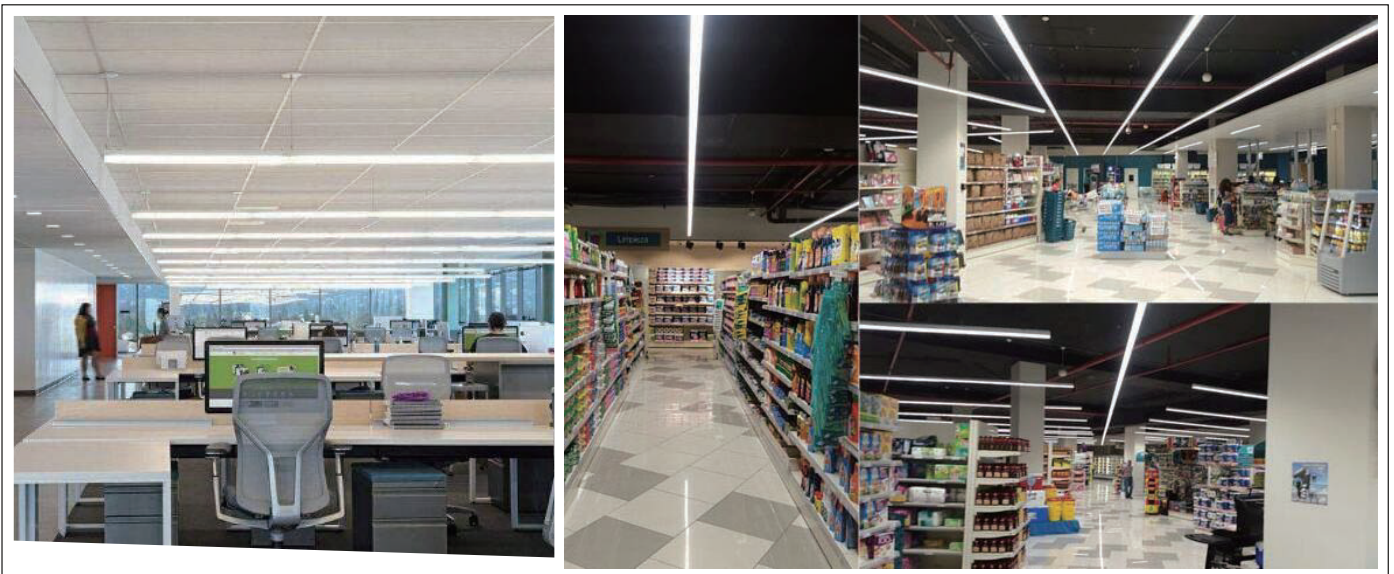
The following multiple functions can be achieved according to customers' requests:

1. CCT options: 3000K, 3500K, 4000K, 5000K.
2. Available with external or built-in microwave motion sensor.
3. Emergency: the power is 8W, it can still work in 1.5hrs while emergency situation.

Testing Report

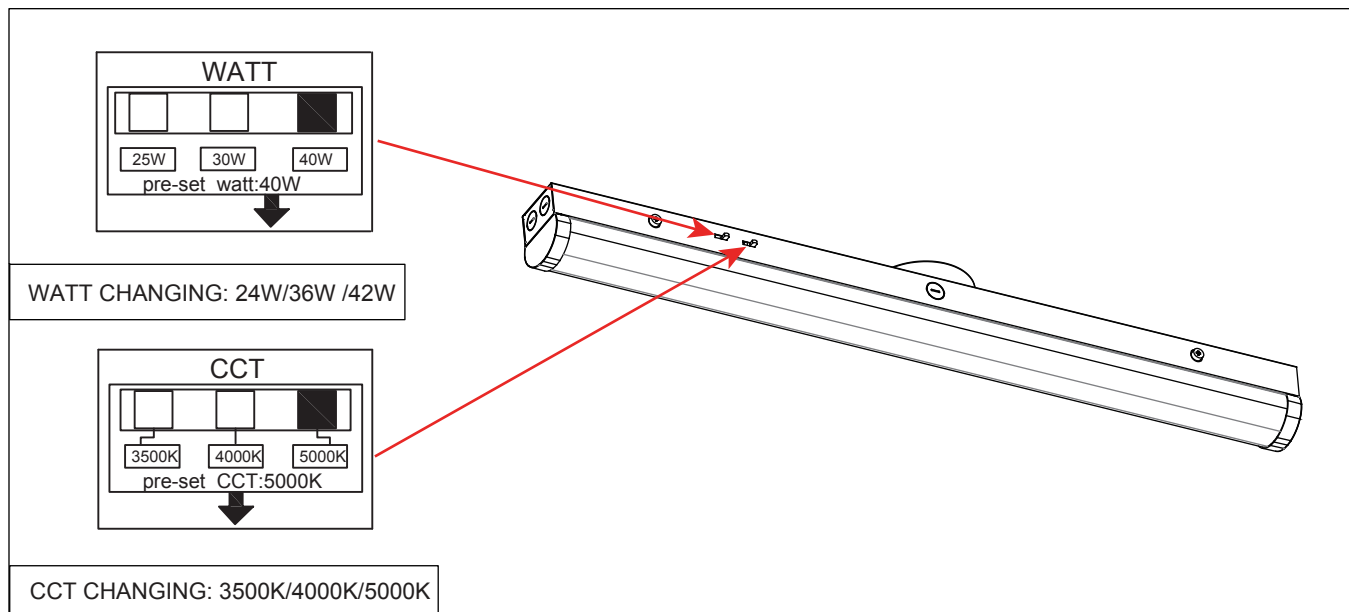


Applications



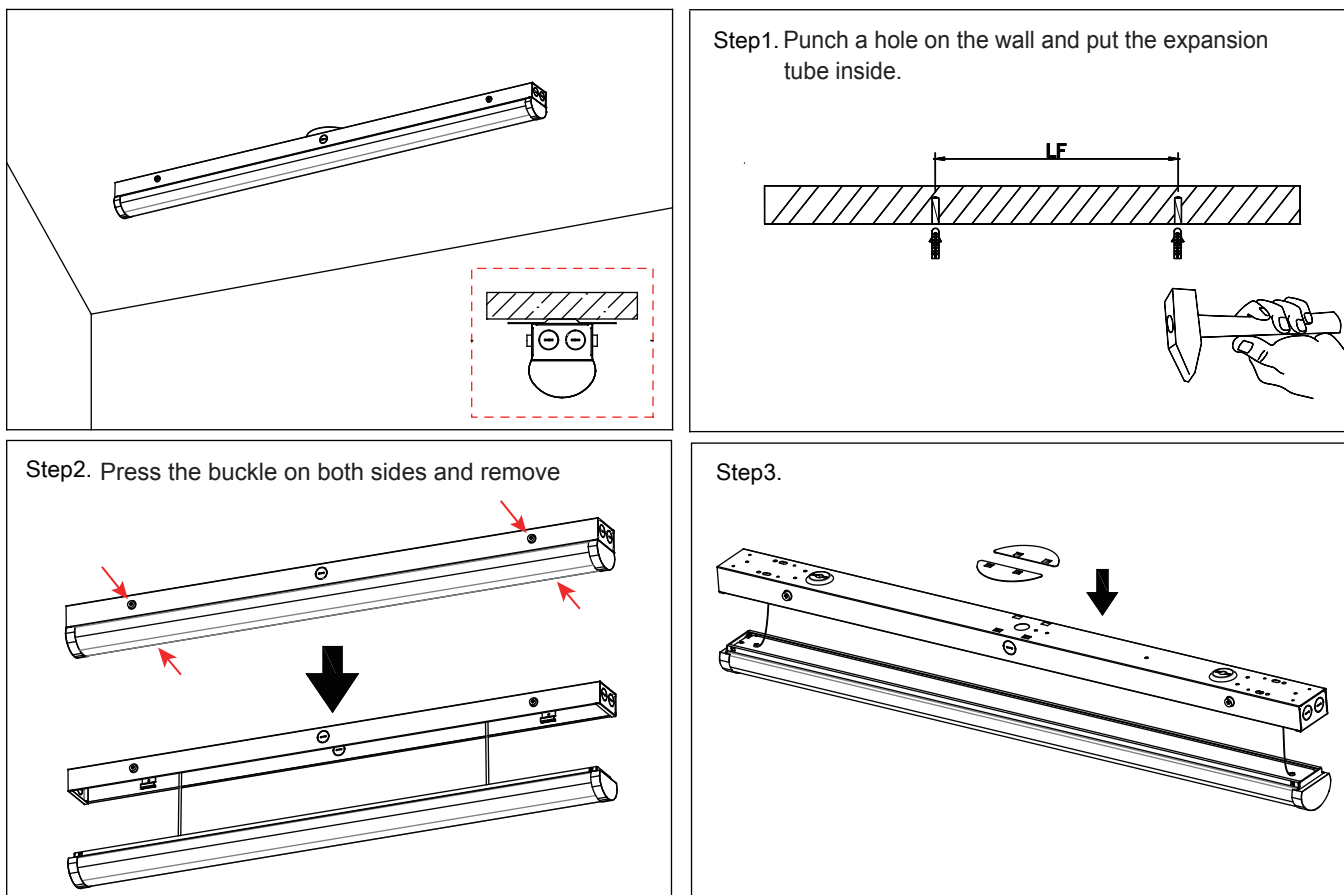


CCT CHANGING

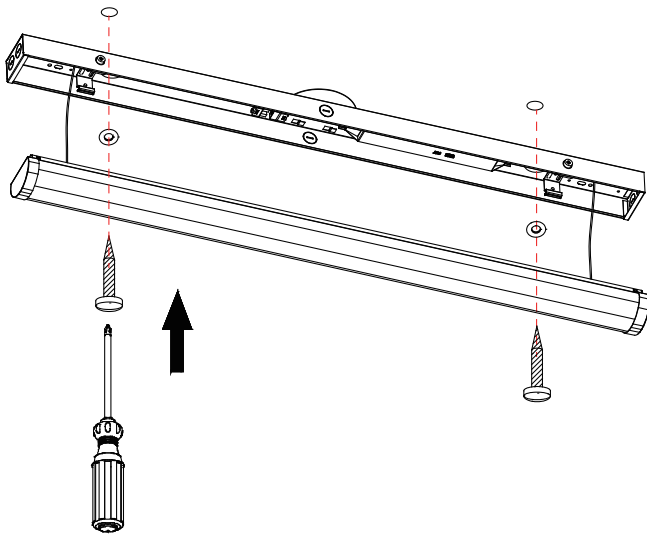


Installation manual

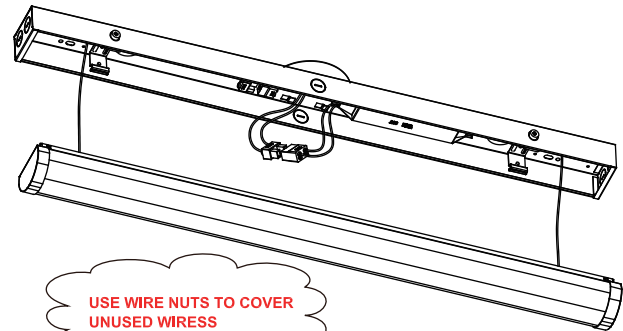
A.Surface-mounted installation



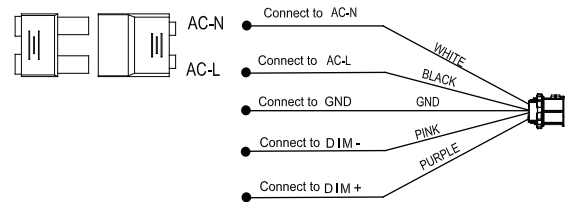
Step4. Secure the fixture on the wall and lock it in tight.



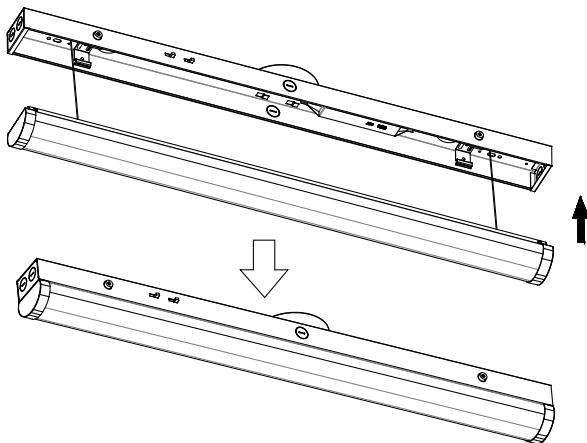
Step5. Turn off the power and wiring by using wire nuts.



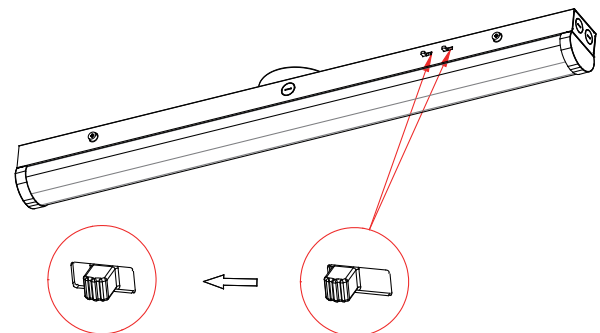
Wiring Diagram



Step6. Press upward the cover and lock it with springs tightly which located into the fixture

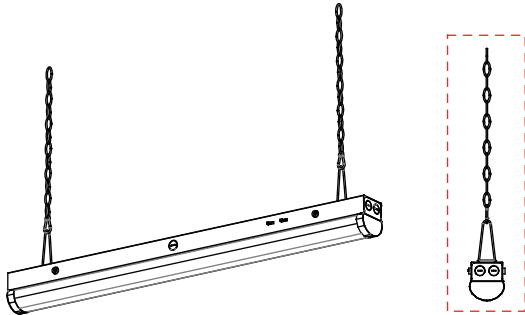


Step7. Installation completed.

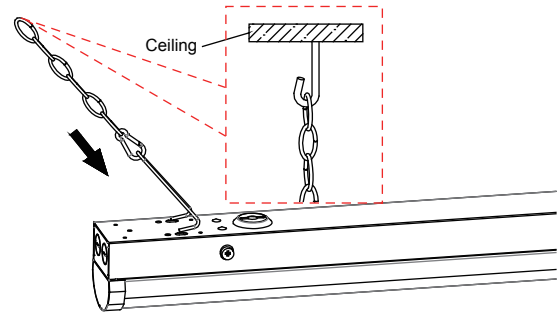


LED CCT SWITCH AND WATT SWITCH

B.Suspending installation (With chains)



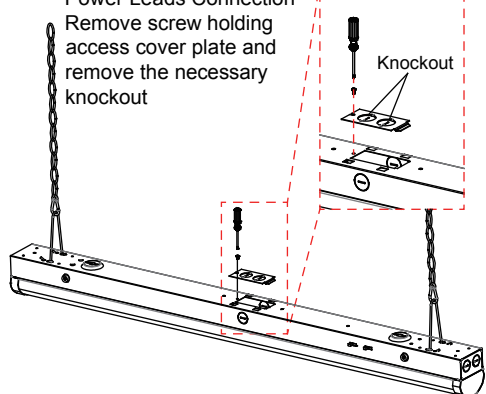
Step1: Fixing the hook and suspending the lamp



Ceiling

Step2

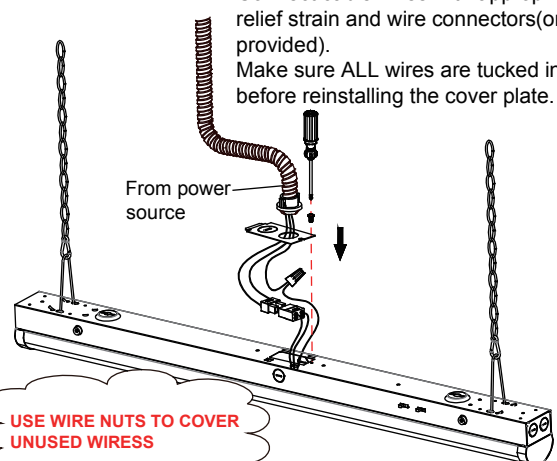
Power Leads Connection
Remove screw holding access cover plate and remove the necessary knockout



Knockout

Step3: Turn off the power and wiring by using wire nuts

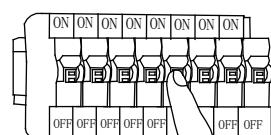
Connect cable wires with appropriate relief strain and wire connectors(ont provided).
Make sure ALL wires are tucked in before reinstalling the cover plate.



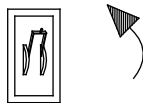
From power source

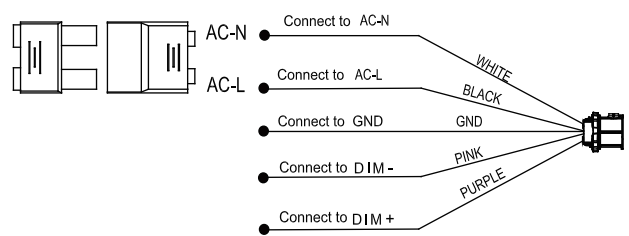
USE WIRE NUTS TO COVER UNUSED WIRESS

Step4



Turn on the switch





AC-N Connect to AC-N

AC-L Connect to AC-L

Connect to GND GND

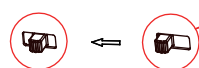
Connect to DIM - PINK

Connect to DIM + PURPLE

WHITE

BLACK

LED CCT SWITCH AND WATT SWITCH





Important

Read this instruction carefully before installation. Keep it for further reference.
Make electrical and grounded connections in accordance with the national electrical code and any applicable code. Always turn off the power supply before installation.
This product must be installed in accordance with the applicable installation code by a qualified electrician who is familiar with the construction and operation of the product and the hazards involved.

WARNING:

- ⚠ Risk of fire or electric shock. Fixture installation requires knowledge of luminaires electrical systems. If not qualified, DO NOT attempt installation. Contact a qualified electrician.
- ⚠ Risk of fire or electric shock. Suitable for wet locations. Always turn off the power supply before installation.
- ⚠ Risk of fire or electric shock. Suitable for non-insulated surface and frame. DO NOT cover fixture with insulation liner or similar material.
- ⚠ DO NOT install fixture on unstable, loose or easily breakable surface.
- ⚠ DO NOT exert force on the surface of the fixture.

Packing /weight

Size	Outer box (L*W*H)	Qty/Ctn (pcs)	N.W/pcs (lbs/Kg)	G.W/Ctn (lbs/Kg)
2ft	25.39"x10.8"x8.66" 645*275*220mm	6	2.4/1.1	17.2/7.8
4ft	49.4"x10.8"x8.66" 1255*295*220mm	6	3.75/1.7	26.5/12.1
8ft	97.44"x7.48"x8.66" 2474*190*220mm	4	7.2/3.28	32.5/14.8

Note

- 1.The installation and maintenance must be completed by electricians or professionals.
- 2.Please cut off the power before installation and maintenance.
- 3.The thermally insulating material is not allowed to cover the fixture.
- 4.Please keep away from the corrosive substance, and keep the fixture dry and clean.
- 5.Working temperature: -4°F~113°F, storage temperature: -22°F~140°F.